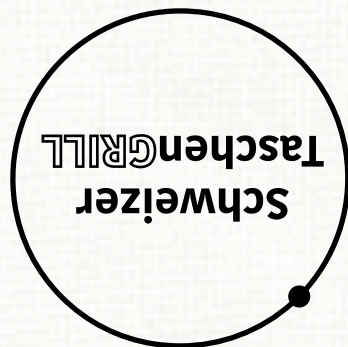


Please read carefully before use.
The instructions is part of the grill.

Operating manual & safety instructions



The **Schweizer Taschengrill** is a **reusable barbecue grill** which values **sustainability and local production**. **Nonprofit organizations** are involved in all production steps. Thanks to innovative design it is ready to use anywhere and can be reused anytime.

Whether you have questions, need more information, or would like to give us your feedback - we are always glad to hear from you.

You have any **questions** or **suggestions**?
We are happy about every feedback.

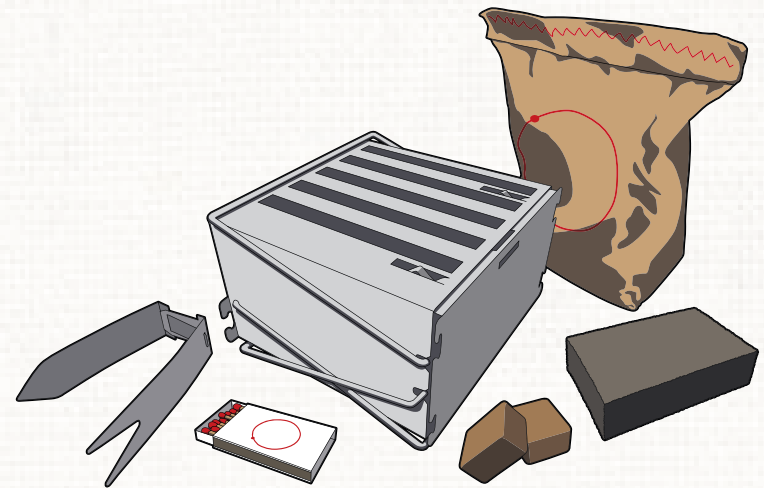
Mehrweg GmbH
Industriestrasse 38
9491 Ruggell

WWW.TASCHENGRILL.CH

Make sure to reorder your **Schweizer Taschenkohle** in time for best use.

CONTENTS

- 1 x Schweizer Taschengrill
- 1 x Schweizer Taschenkohle
- 1 x barbecue tongs, consisting of fork and knife
- 1 x cleaning sponge
- 2 x firelighters
- 1 x matchbox



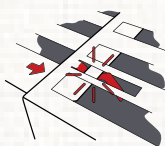
Safety instructions

- The grill **must not be used in closed rooms**. Disregard can cause smoke poisoning and death.
- Only use **firelighters to light up**, never use **methylated spirits or gasoline**. Never spray **liquid igniters** into open fire or ember.
- The grill may contain **sharp edges** which might cause cuts.
- The grill is getting hot!** Once lit, do never touch with bare hands.
- Use **supplied grilling tools** and **fireproof pad**. **Attention: ember could fall out.**
- While grilling, **do not leave the grill unattended**. Keep children and animals out of reach.
- Let the grill completely cool down** before cleaning and packing up.
- Protect contents from **moisture** and **hot environment**.

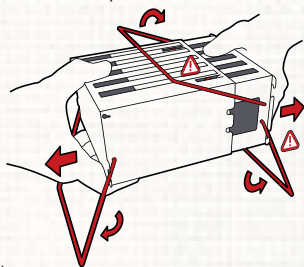
Operating manual

Step 1 (locking):

Take the Schweizer Taschengrill out of the box and expand it.



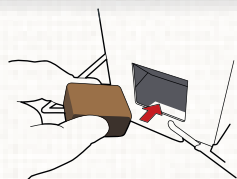
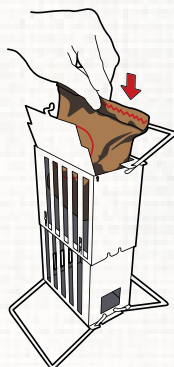
Pull it completely apart until it **snaps and locks in**.



Fold out the three grill feet, **lift** them over the side notches and **anchor** them in place.

Step 2 (filling):

Place the Schweizer Taschengrill upright on its two feet and insert one package of **Schweizer Taschenkohle** through the open flap and **slide it down**. Then close the flap.



Step 3 (light up):

Insert firelighters into both side openings. Use a match to ignite firelighters.

Use fireproof pad!
Ember could fall out!

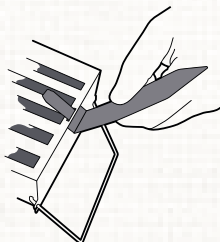
After **approx. 10 minutes** the grill is ready to use.

Note:

Alternatively, regular coal can be used (max. 180 gramm). Duration and suitability for the grill can vary, however.

Step 4 (level):

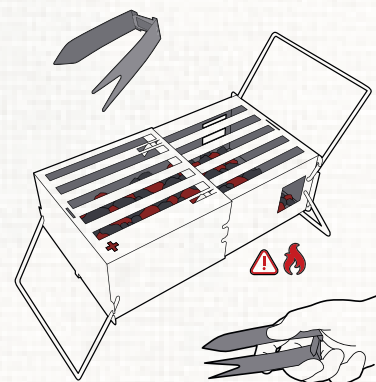
Put fork and knife into fitting slots to place the grill horizontally. Then even up the ember.



Attention: Embers might fall out, fork and knife can get hot!

Step 5 (barbecue):

Now the grill is ready to use. Knife and fork can be put together to barbecue tongs.



Tip:

A pack of **Schweizer Taschenkohle** lasts for **approx. 30 minutes** of grilling. For additional time add another pack of Schweizer Taschenkohle.

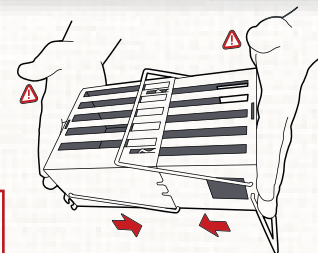
When refilling the coal might ignite itself.
Never use methylated spirits or gasoline!



Step 6 (pack up):

After use, let the pocket grill **cool down**, then dispose of the coal remnants. Alternatively, transport the cooled down coal in the pocket grill.

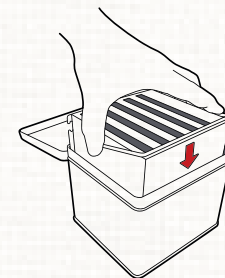
Hold the grill with **flat hands from the outside** and push it together by lightly clapping on the sides of it.



Grill can suddenly snap in place.
Place fingers **outside** the grill area.

Tip:

Pre-clean with cleaning sponge. For **safe and clean** transport, put the **cooled down** grill in the box.



Step 7 (cleaning):

Before cleaning in the dishwasher, **expand** the grill. If necessary, pre-clean with cleaning sponge.

